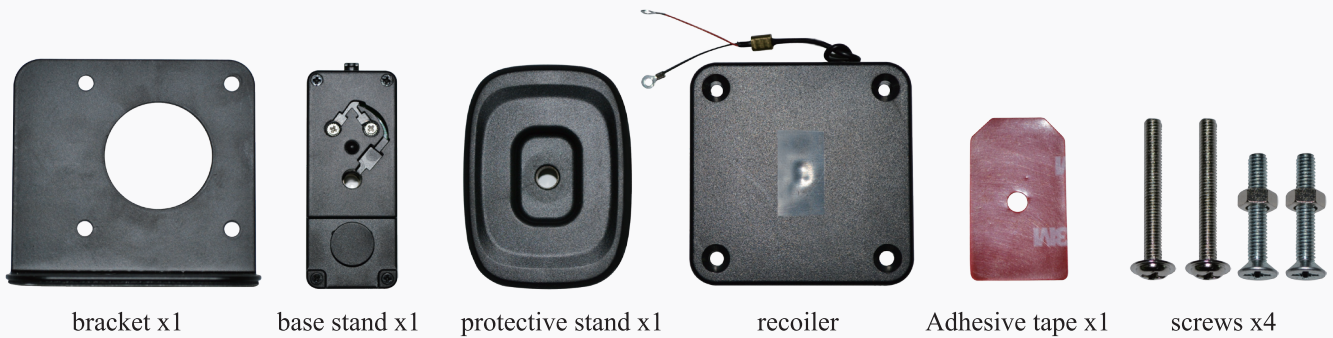


Please follow the instructions carefully. 15924 is used for protecting mobile phones, GPS, MP4 and other similar items. It allows customers easy access to touch, feel and operate the display yet when removed or wire cut, alarm will activate with LED flashing.

## Accessories in 15924



bracket x1

base stand x1

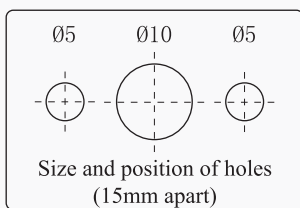
protective stand x1

recoiler

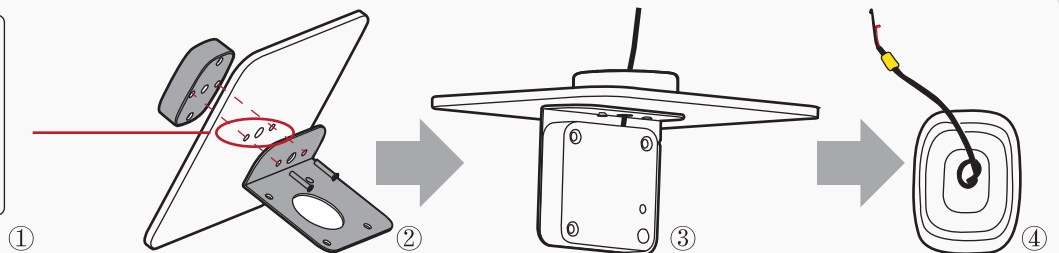
Adhesive tape x1

screws x4

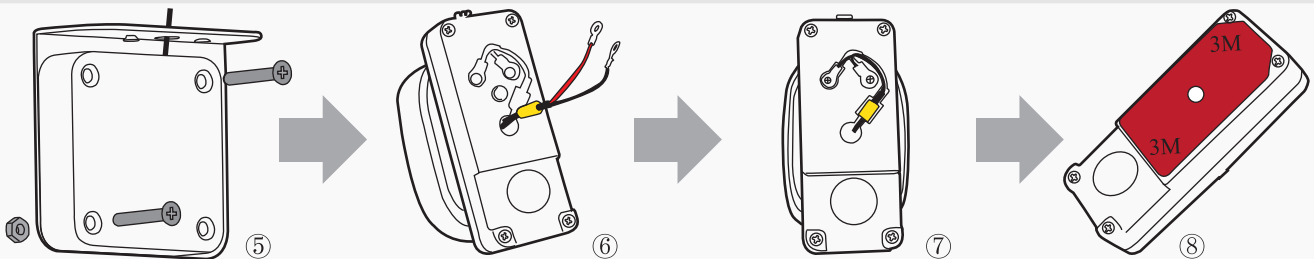
## Installation Procedures



Size and position of holes  
(15mm apart)

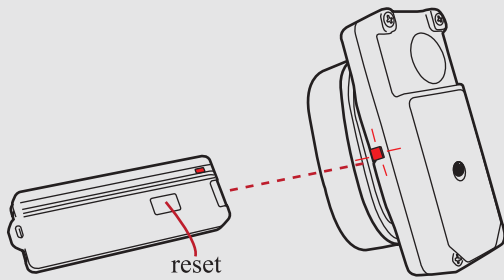


1. Drill 3 holes based on the “size and position of holes” to the surface where installation is to take place.
2. Place “bracket” and “base stand” as shown and fix into position with screws.
3. Place “recoiler” as shown and extend cable to “protective stand”.
4. Make a knot as shown to prevent cable to retrieve back to recoiler during installation.



5. Secure “recoiler” on/to “bracket” with screws.
6. Untie knot on cable and insert through “protective stand”.
7. Place cable securely into slot on “protective stand” and tighten with screws. No distinction on colour, black and red cable can be placed in either position.
8. Place “adhesive tape” on to “protection stand”. Best to leave in place for 8 hours before securing item.

## Arm and Disarm



1. To operate Remote Resetter, place it within 10cm from “protective stand” as shown.
2. Press reset button.

## Features

**Standy-by mode:** when item is placed on the protective stand and sensor depressed, LED will flash 6 times with two beeps to indicate unit is on stand-by mode.

**Cashier function:** if remote resetter, RC900N, is used to disarm unit prior to removal of item. There is a 10 second period for removing item without causing alarm. After 10 seconds and with sensor depressed, the unit will return to stand-by mode.

**Alarming:** When item is removed or cable cut, the tag will alarm with LED flashing.

**Disarm:** Place remote resetter, RC900N, within 10cm from tag and press reset button to disarm.

**Auto off and reset:** if alarm is activated and not disarmed by remote resetter, the alarm will stop after 5 minutes will return to stand-by mode with two beeps if sensor remains depressed.

**Note:** to preserve battery on 15924, best to disarm as quickly as possible with remote resetter after alarming. If LED on remote resetter is dim, replace with new battery.